

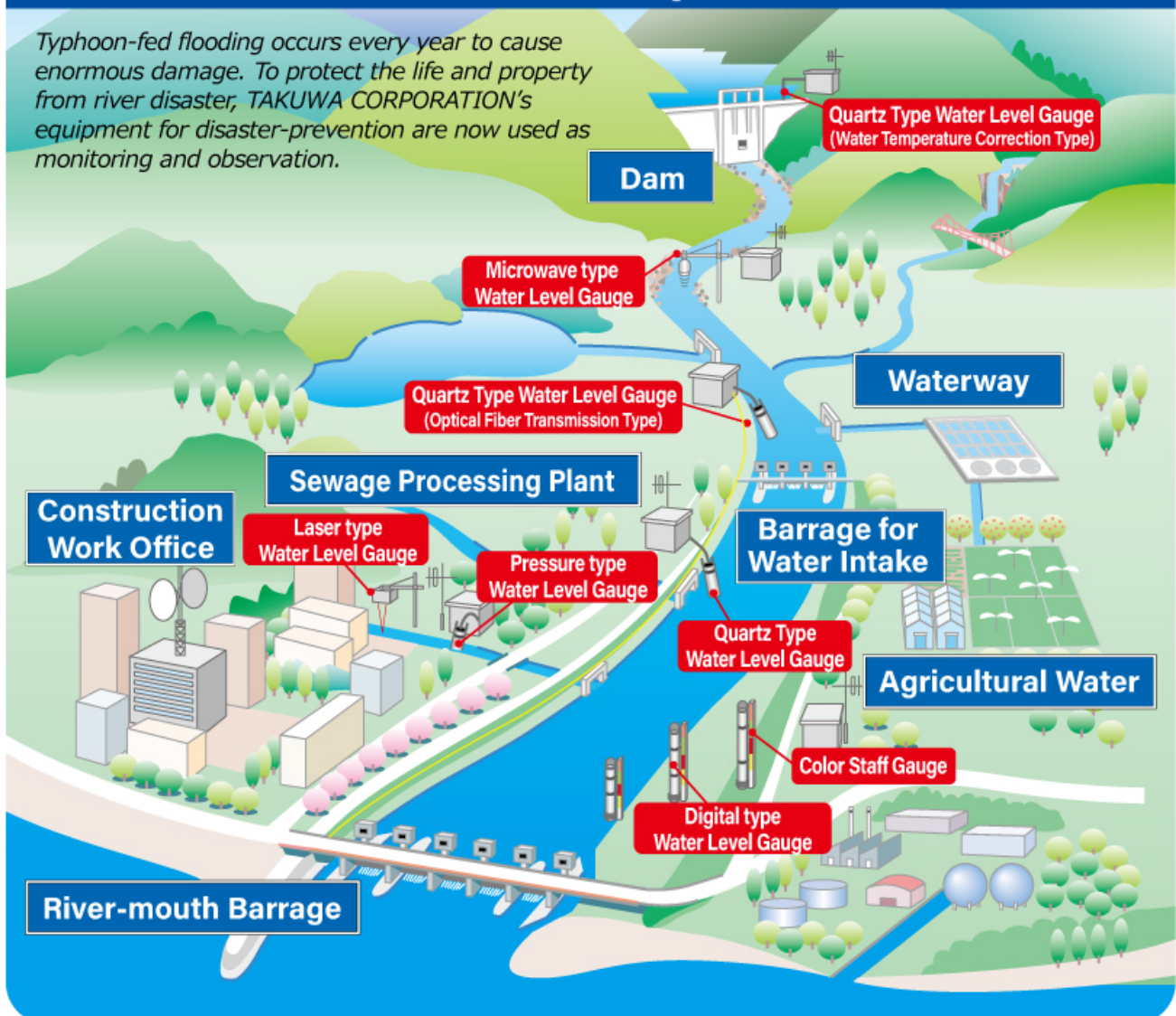


Water Monitoring Sensors for Preventing

Realization of prevention/mitigation of flood disasters in rivers and dams by using reliable water sensors.

Monitoring Sensors for River Disasters TAKUWA Corporation

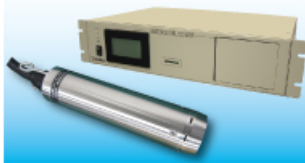
Typhoon-fed flooding occurs every year to cause enormous damage. To protect the life and property from river disaster, TAKUWA CORPORATION's equipment for disaster-prevention are now used as monitoring and observation.



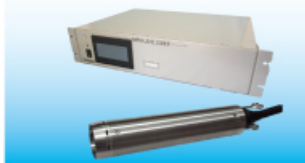
Quartz Type Water Level Gauge



Quartz Type Water Level Gauge
(Water Temperature Correction Type)



Quartz Type Water Level Gauge
(Optical Fiber Transmission Type)



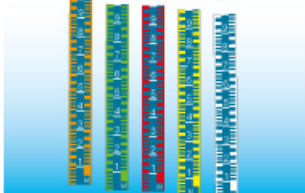
Pressure type Water Level Gauge



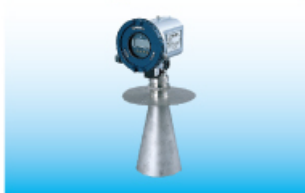
Digital type
Water Level Gauge



Color Staff Gauge



Microwave type Water Level Gauge



Laser type Water Level Gauge



Hazard

Tsunami Cyclone Storm Surge Flood

Solution Purpose

Prevention & Mitigation Preparedness Response

Solution Theme

Research & Investigation Risk Assessment Infrastructure Technology Information & Communication
Technology Products & Goods

Technology Subject

Feasibility Study Risk Monitoring River & Basin Dam & Reservoir Sabo Port Essential Utilities Urban
Information Gathering Information Analysis & Judgement Information Communication Information
Platform Machinery & Equipment

Advantages

Our water sensors have high reliability which is composed of high accuracy and durability, and lineup which is selectable depending on purpose and site conditions. These sensors can contribute to flood forecasting/warning and appropriate gate operation in rivers and dams in order to prevent and mitigate the flood disasters.

Solution Illustrated

Proposal and provision of reliable water sensors which are selectable depending on purposes and site conditions

Background

Using reliable water sensor is fundamental and important for appropriate flood warning/forecasting of rivers and dams. Because, some errors will bring inappropriate cognizance and operation, furthermore these may add serious flood damages.

We can provide such reliable sensors which have been improved based on experience of on-site operation at rivers and dams in Japan and Asian countries past 60 years.

Exposition of the Solution

1. Water Level Gauge

We have lineup of sensors which can be selected depending on purpose, needs and site conditions of river and dam (accuracy, range, installable condition, durability and cost etc.) Especially, our sensor's accuracy, stability and durability can contribute to accurate and appropriate monitoring/control of river and dam.

- 1) Quartz type: High accuracy and durability, wide measurement range
- 2) Fiber-optic quartz type: High lightning protection by using fiber optic for sensor signal line
- 3) Others: Pressure type, Ultrasonic type, Radar type etc.

Achievements of Examples

Clients in Japan

- Ministry of Land, Infrastructure, Transport and Tourism (MLIT)
- Ministry of Agriculture, Forestry and Fisheries (MAFF)
- Japan Water Agency (JWA)
- Japan Meteorological Agency (JMA)
- Local governments
- Electric companies (TEPCO, KEPCO etc)

Clients in overseas

- Vietnam (EVN)
- Myanmar (MOAI)
- Indonesia (PU, DPU-DKI etc)
- South Korea (MOLIT etc)

Application system of our sensors

- Flood forecasting and warning system, Dam control system

Corporate Profile

Takuwa Corporation

1-4-15 Uchikanda, Chiyoda-ku, Tokyo 101-0047, Japan

☎ Tel. : +81-3-3291-5380

✉ E-mail : e-info@takuwa.co.jp

🌐 Website : <https://www.takuwa.co.jp/en/index.html>